

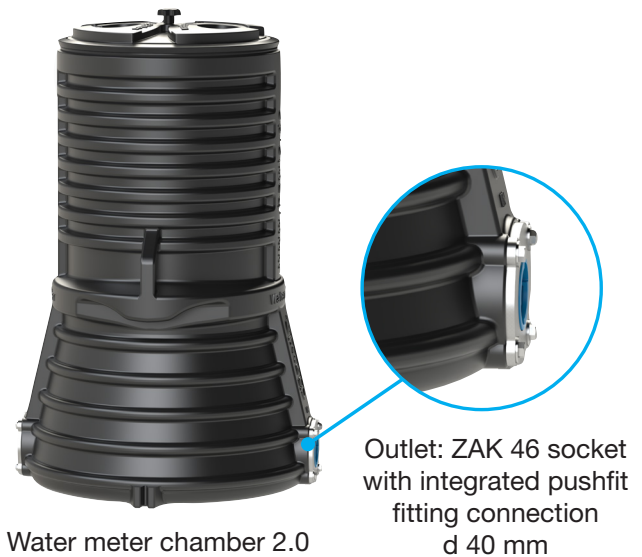
General information

Hawle water meter chamber 2.0

The Hawle water meter chamber 2.0 was developed for domestic water connections and is particularly suitable for new builds or renovation cases.

Furthermore the water meter chamber 2.0 can be used in building areas with a risk of pressing ground water or flooding. The chamber body seals reliably against externally pressing water. The special external shape prevents the chamber from floating, and the chamber can be fastened to a foundation using the existing lugs. For an easy reading of the water meter or for maintenance purposes, the meter fitting installed in the water meter chamber can be removed under operating pressure. The plug integrated in the shut-off valve automatically shuts off when the meter fitting is removed, thus avoiding the need for additionally shutting off the potable water pipeline.

The water meter fitting can be operated with common analogue and digital water meters ($Q_3 = 2.5 - 4$). The use of digital water meters allows convenient readings by the operator using remote reading devices. For this purpose a special chamber cover can be used for the integration of an external antenna. The separately available Hawle water meter chamber cover is available in versions B125 (weight 12.5 t) for parking areas



/ sidewalks and A15 (weight 1.5 t) for green spaces / parks. Thanks to the flexible height adjustment of the water meter chamber cover, a height adjustment of 0-30 cm can be made. The water meter chamber 2.0 is available in pipe cover depths of 1.0 m, 1.25 m and 1.50 m and with two ZAK 46 socket outlet variations with integrated push-fit fitting for PE pipes of d 40.

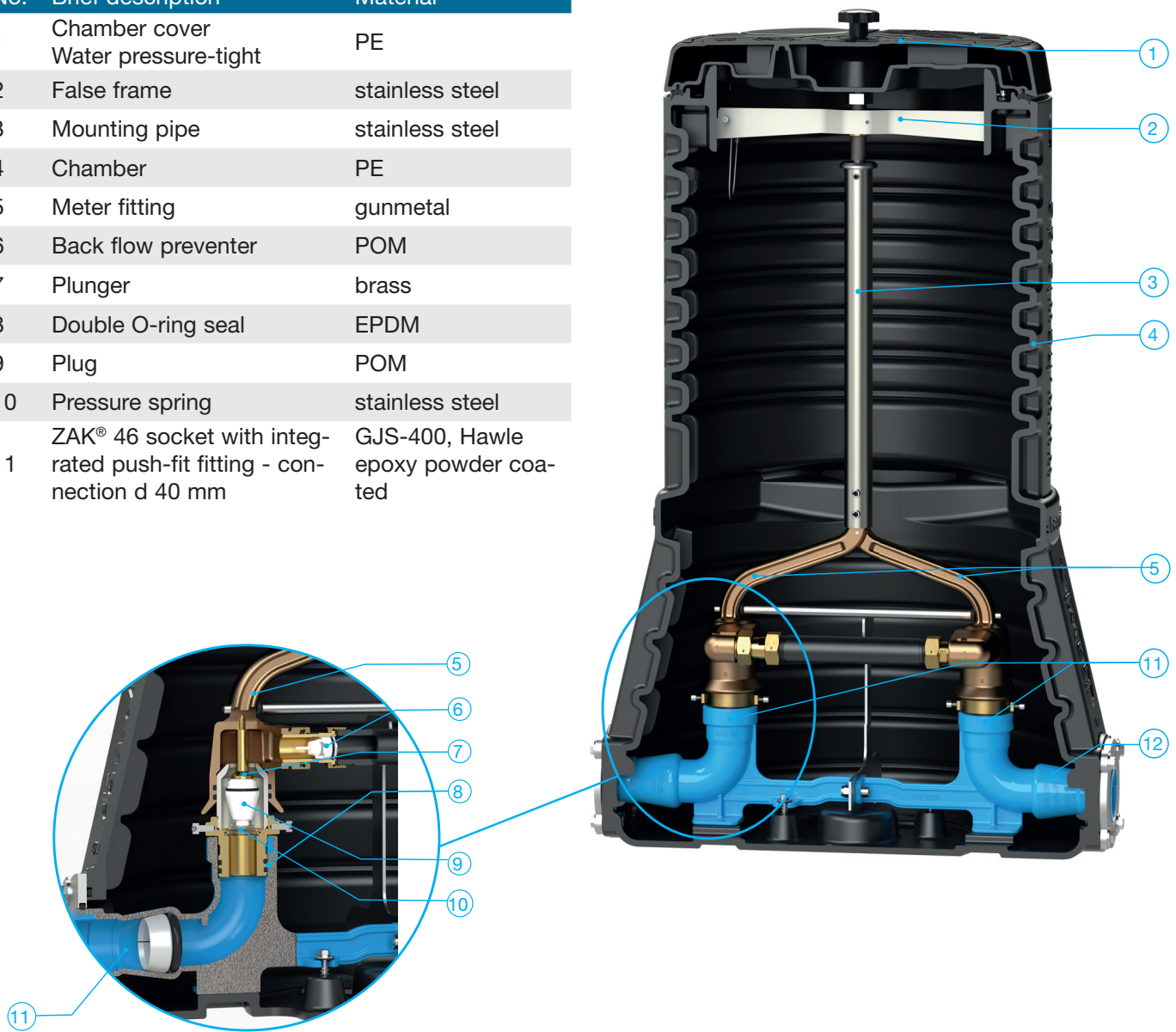
Technical features

- Easy removal of the meter fitting
- Automatic shut-off when meter fitting is removed
- Operator-friendly changeover of water meters
- Meter fitting can be removed while under pressure
- Dirt-resistant shut-off valve
- Shut-off valves in the chamber replaceable via proven ZAK® system
- Integrated back flow preventer
- For standard water meters $Q_3 = 2.5 - 4$ (face-to-face length 190 mm)
- Max. operating pressure PN 10
- Flexible connection via proven ZAK® system
- No angle seat shut-off unit necessary thanks to integrated automatic shut-off
- Available pipe cover depths 1.00 m, 1.25 m, 1.50 m
- ZAK 46 socket connection versions with integrated push-fit fitting connection d 40 mm
- Load on the water meter chamber cover 12.5 t (B 125) or 1.5 t (A 15)
- Adaptation of pipe cover depth with aid of the chamber cover (0 - 30 cm)
- Usable as a construction water chamber with blind connection
- Quick conversion from construction water connection to meter fitting
- Pressurized-water-protected chamber with float protection
- Own chamber cover for integration of an external antenna

Hawle water meter chamber 2.0

Assembly of water meter chamber 2.0

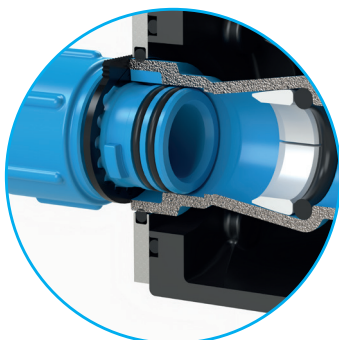
No.	Brief description	Material
1	Chamber cover Water pressure-tight	PE
2	False frame	stainless steel
3	Mounting pipe	stainless steel
4	Chamber	PE
5	Meter fitting	gunmetal
6	Back flow preventer	POM
7	Plunger	brass
8	Double O-ring seal	EPDM
9	Plug	POM
10	Pressure spring	stainless steel
11	ZAK® 46 socket with integrated push-fit fitting - connection d 40 mm	GJS-400, Hawle epoxy powder coated



1 outlet - 2 options

Thanks to the integrated ZAK® socket, all fittings with ZAK® spigot end and PE pipes d40 can be connected to the outlet.

ZAK 46 socket



PE pipe d 40 mm

