

Hawle PRO butterfly valve DN 150 - DN 600

2

The Hawle PRO butterfly valve is provided with a proportional action sealing system. The sealing is accommodated in the body of the butterfly valve. When open, the same pressure is admitted to the valve disc from all sides, thus reliably preventing unintended deformations of the gasket. As soon as the PRO butterfly valve is moved to closed position, the valve seal is pressed against the valve disc. The contact pressure depends on the water pressure. The proportional action sealing system ensures reliable sealing on the one hand and a long service life due to low wear of the sealing on the other.

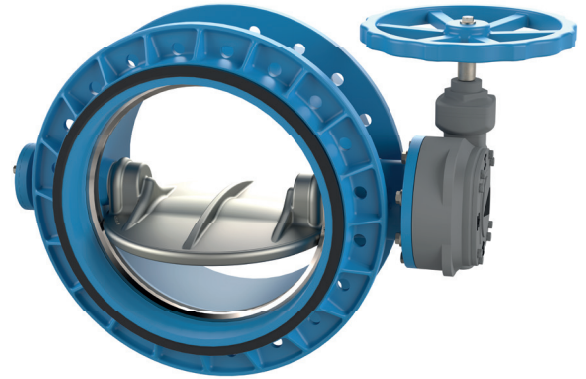
In underground installation particularly, the Hawle PRO butterfly valve® guarantees a long, maintenance-free operation and minimizes subsequent maintenance measures.

The Hawle PRO butterfly valve is provided with the same loose flange system as the exchange gate valve. Therefore, apart from being used in new constructions, the butterfly valve is mainly suitable for exchanging existing valves.

When carrying out new builds the integrated loose flange system makes a dismantling joint unnecessary.

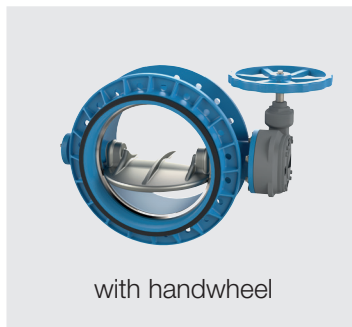
The flat gaskets are already included in the barrel gaskets. Therefore, no keying is required between the flanges.

Moreover, the loose flange system has some advantages in terms of storage. The flanges can be quickly and easily changed from PN 10 to PN 16 or vice versa.



Drive variants

Plant installation



with handwheel



with electric actuator



with pneumatic adaptor



drive unit with digital control

Buried installation



with extension spindle



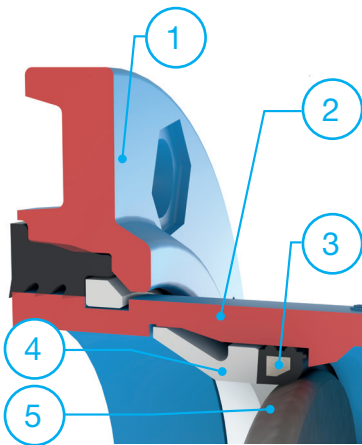
drive unit with digital control



with head stock with handwheel

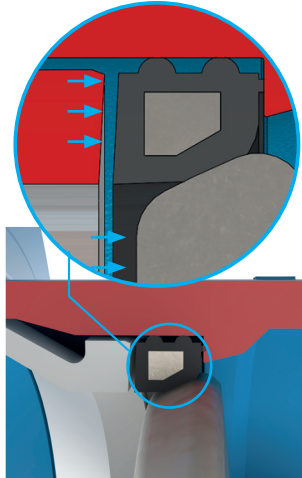
Proportional action sealing system (Hawle PRO butterfly valve)

- Innovative proportional action sealing system in the valve body
- Eccentric bearing of the valve disc
- Stress-relieved bearing of seat gasket in open position
- Low operating torques
- Maintenance-free



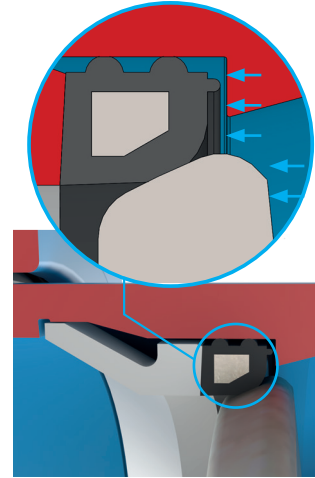
Section view of sealing system

1. Loose flange
2. Body
3. Steel-reinforced seat gasket
4. Retaining ring
5. Valve disc



Functional principle 1

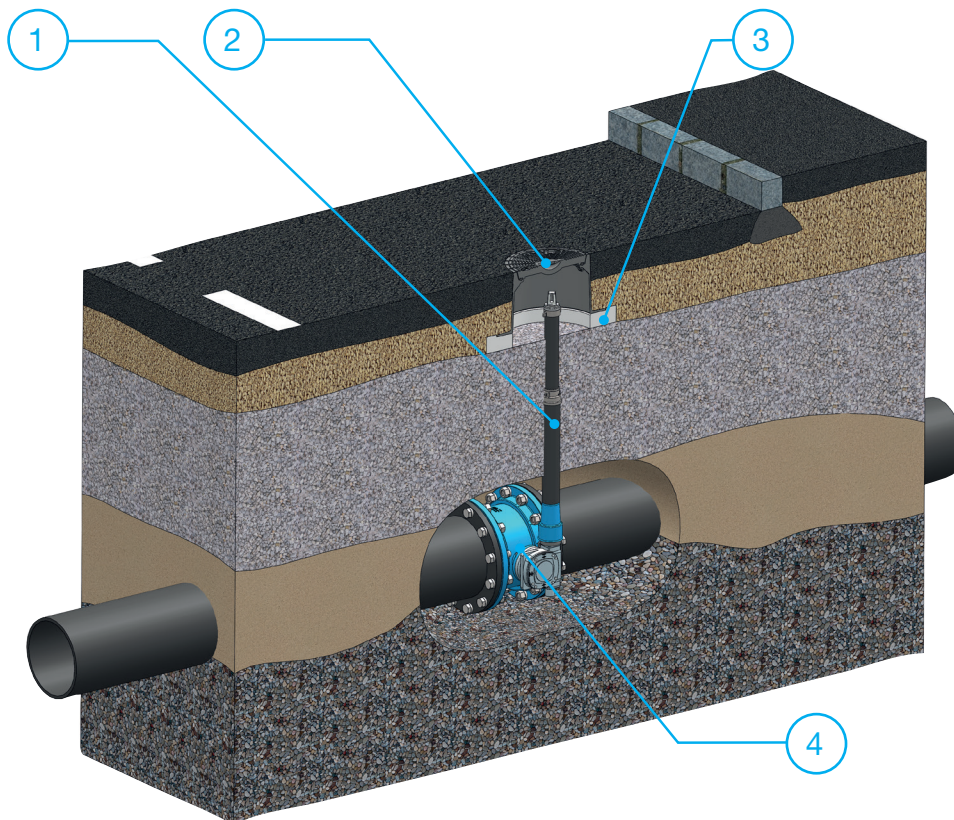
Operating pressure presses
seat gasket against valve disc



Functional principle 2

Operating pressure presses
valve disc against seat gasket

Installation example buried installation



1. Extension spindle
2. Surface box
3. Base plates for surface box
4. Hawle PRO butterfly valve