

### 1. Intended use:

The Hawle-Combiflex is used in the drinking water supply up to a max. operating pressure of 16 bar. Please observe the applicable standards and regulations, accident prevention regulations and the regulations of the employers' liability insurance associations as well as CE labelling. Valves must be installed „stress-free“ in accordance with the DVGW regulations - this also applies to the Hawle Combiflex. Installation should only be carried out by appropriately trained personnel.

### 2. Product description:

The typical applications of the Hawle-Combiflex gate valves are „open“ or „closed“. The gate valves are not control valves! The gate valves of the Hawle-Combiflex are operated by an extension spindle with underground installation. The handwheel or electric actuator must be used in the chamber or system area. The handwheel sizes or operating keys recommended by us must be used. „Extensions“ and the like are inadmissible.

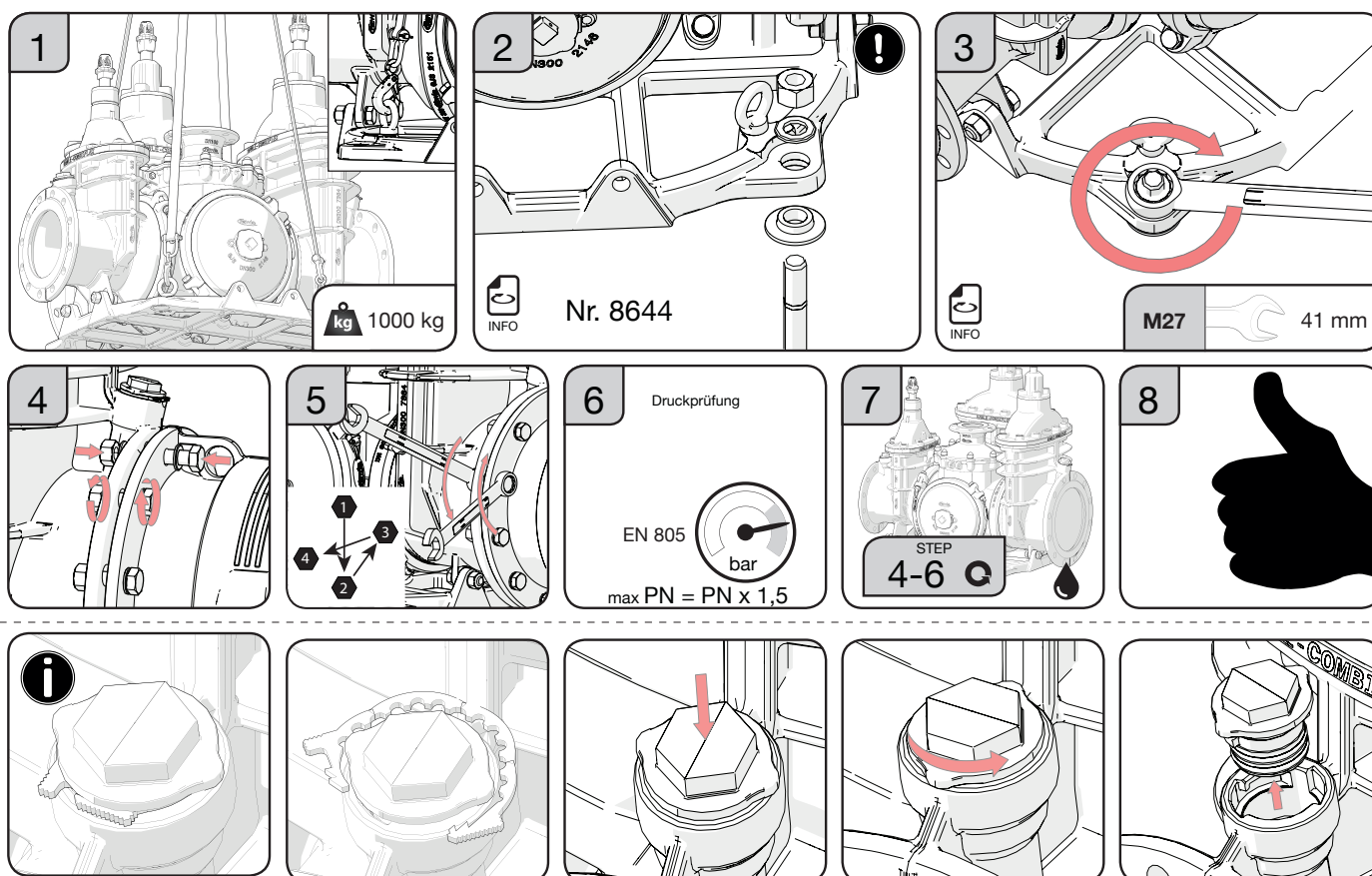
When installing gate valves with electric actuators, the relevant operating instructions and CE marking regulations must be observed.

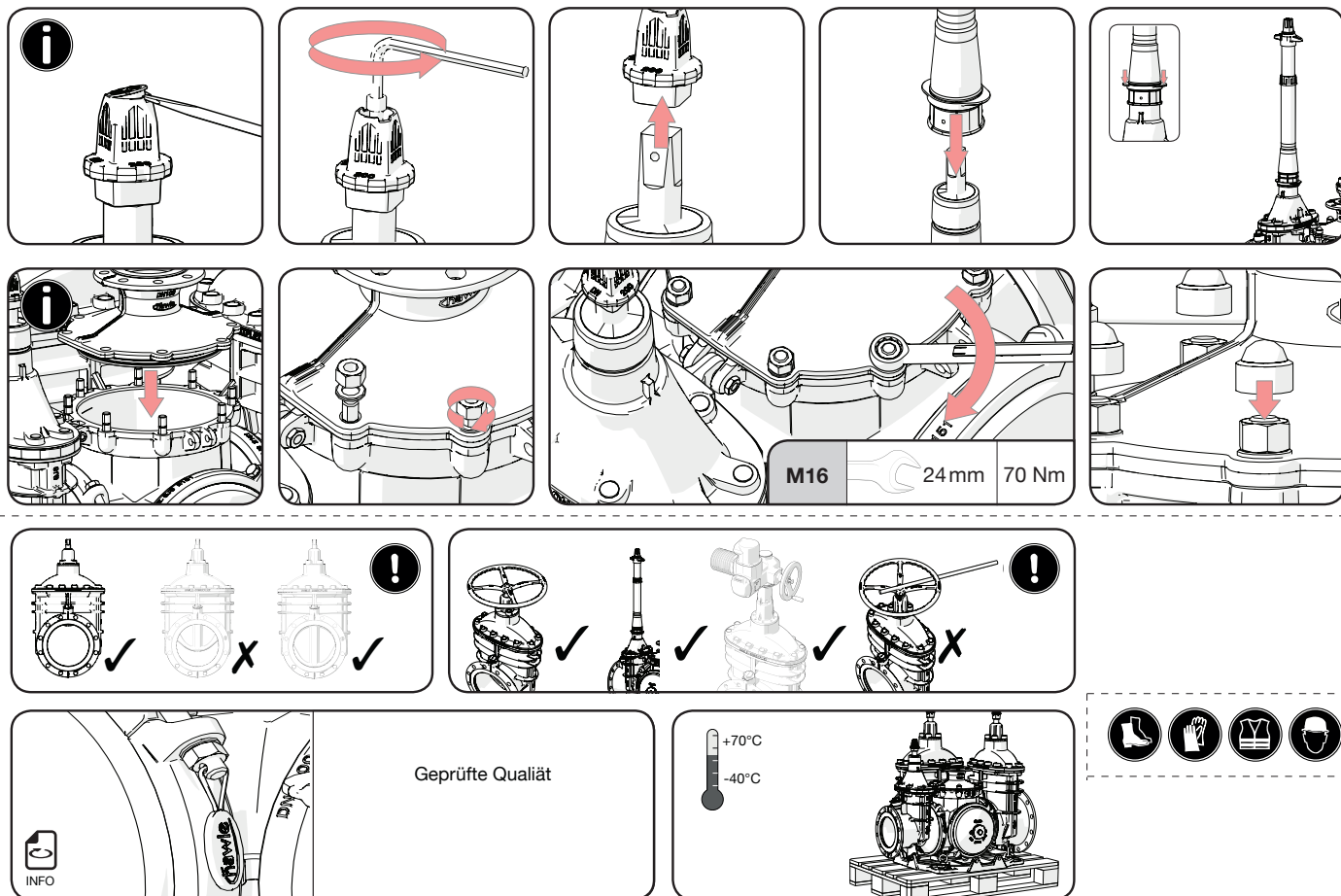
### 3. Assembly:

The ready-to-use Hawle-Combiflex must be protected from damage during transport.

When loading and transporting the Hawle-Combiflex with cranes, it may only be suspended from the lifting lugs provided. The handwheel must not be suspended.

When installing in the pipeline system, make sure that the connecting flanges of the pipeline coming into contact with the gate valve are parallel to each other and aligned in order to avoid clamping forces on the gate valve housing. Also for this reason and in order to achieve an even pressing of the flange gaskets, it is necessary to tighten the connecting screws as evenly as possible. Observe the tightening torques of the screws!





#### 4. Service and maintenance:

The gate valves of the Hawle-Combiflex are designed for maintenance-free operation. To ensure trouble-free operation, however, we recommend that the gate valves be actuated once a year (earlier if a heavy coating is expected), as recommended in DVGW Code of Practice W 392.

For gate valves with electric actuators, a visual inspection of the gate valve, actuator and electrical installation is required at least once a year in addition to the functional check. Please also observe the European regulations on CE marking (e.g. EU „Machinery Directive“, EU „EMC Directive“, accident prevention regulations, etc.)

#### 5. Commissioning and pressure testing:

After installation, please perform a pressure test in an open pipe trench, as described in the DVGW regulations: Open gate valve, fill pipeline and pressure test with unfilled trench. The Hawle gate valves are designed for a maximum operating pressure of 16 bar.

Should you have questions or need further information, please contact:

Hawle Armaturen GmbH  
 - Application Engineering -  
 Liegnitzer Str. 6  
 83395 Freilassing  
 Telephone: +49 8654 6303-0  
 Fax: +49 8654 6303-222  
 Email: [info@hawle.de](mailto:info@hawle.de)  
 Website: [www.hawle.de](http://www.hawle.de)