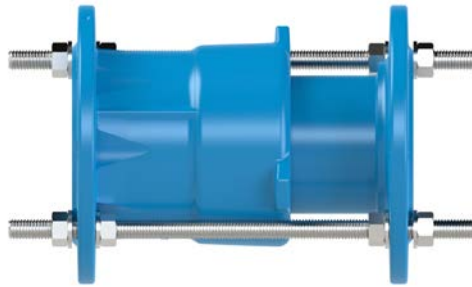


1. Intended use / Product description



Medium: Potable Water / Municipal Sewage
Max. operating pressure: 16 bar
Material: Body: GJS-400, Hawle epoxy powder coating
Seal: EPDM
Threaded rod: stainless steel
Nut and washer: stainless steel

The Hawle dismantling piece, consisting of an EU-fitting (flanged socket) and an F-fitting (flanged spigot fitting), is a telescopic flange fitting which facilitates the installation and dismantling of valves and fittings in plant construction. In addition, the telescopic dismantling piece can be used for length adjustment when laying new pipelines. In this way, valves and fittings can be connected with an exact fit.

During installation and maintenance operations, the applicable standards and guidelines, accident prevention regulations and the regulations of professional associations are to be observed and complied with. Installation and maintenance operations may only be performed by qualified personnel.

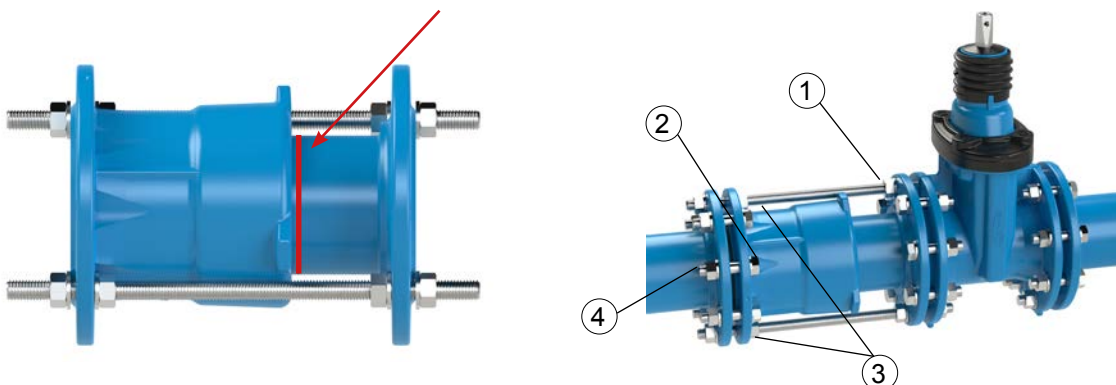
2. Assembly

	Open-end wrench
---	-----------------

General:

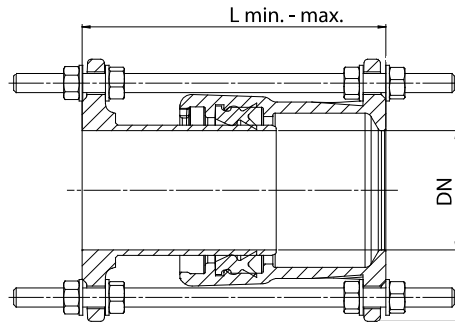
The appropriate regulations of the German Technical and Scientific Association for Gas and Water (DVGW) and the German Association for Water, Wastewater and Waste (DWA) for producing a flange connection must be observed when installing the dismantling piece in the pipeline.

1. Screw one flange of the dismantling piece to the counter flange. In the process, tighten all eight screw connections.
2. Then align the other flange, insert a flange seal and fit and tighten six screws of the opposite side (observe torque).
3. Finally, tighten the nuts of the threaded rods on the inside, while adjusting to the required length (see table). The maximum length is marked with a red line. This line must not be visible when installed.



4. Then tighten the nuts on the outside and finally retighten all eight screw connections once more.

Table showing the range of adjustment:



Ord. No.	DN	Range of adjustment	
		L min (mm)	L max (mm)
851 900 0800	80	210	240
851 900 1000	100	210	260

3. Maintenance

The Hawle fitting and extension piece is maintenance-free.

4. Commissioning/Pressure test

After successful installation, a pressure test must be carried out in an open pipe trench in accordance with DVGW- and DWA regulations.

If you have any other questions or if you need more information please contact:

Hawle Armaturen GmbH
 - Application Engineering -
 Liegnitzer Str. 6
 83395 Freilassing
 Phone: +49 (0)8654 6303-0
 Telefax: +49 (0)8654 6303-222
 E-Mail: info@hawle.de
 Web: www.hawle.de