

General information

Wall inlet fittings

Hawle offers wall inlet fittings in the widest range of versions, materials and dimensions. Which pipe entry connection is suitable for your application depends on the one hand on the assembly situation (dry- or wet installation) and on the other on the type of pipe entry connection (medium-bearing or in a protective pipe design). Hawle wall inlet fittings seal against stray gases and non-pressing water.

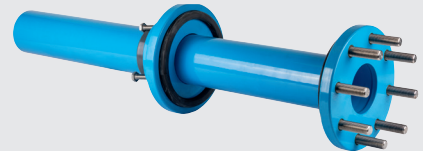
Medium-bearing versions



Pipe entry connection
Ord. no. 687-00 (wet installation)

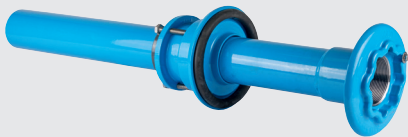


Pipe entry connection
Ord. no. 697-00 (wet installation)



Pipe entry connection
Ord. no. 685-00 (dry installation)

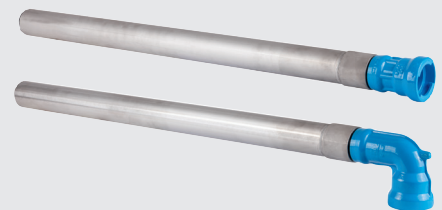
With protective pipe



Quick installation pipe entry connection
Ord. no. 683-00 (dry installation)



Plastic pipe entry connection
Ord. no. 684-00 (dry installation)



Protective pipe for pipe entries, stainless steel, ord. no. 705-00, 706-00 (dry installation)

Medium-bearing wall inlet fittings for wet installation, ord. no. 687-00, 697-00

Medium-bearing wall inlet fittings are generally used in concrete masonry. Before the unset concrete is poured in, the pipe entry connection is inserted into the formwork of the building's outer wall. Then the formwork is filled with unset concrete. As the unset concrete sets and hardens, a form-locked restraint connection is created between the masonry and pipe entry connection via the integrally cast webs.

Technical features

- Medium-bearing
- No sealing problems in the masonry / cast iron body connection
- Transition of pipe entry connection and medium pipe outside the building
- Building exterior, standard with push-fit fitting for PE pipes (PVC on request)

Wall inlet fittings

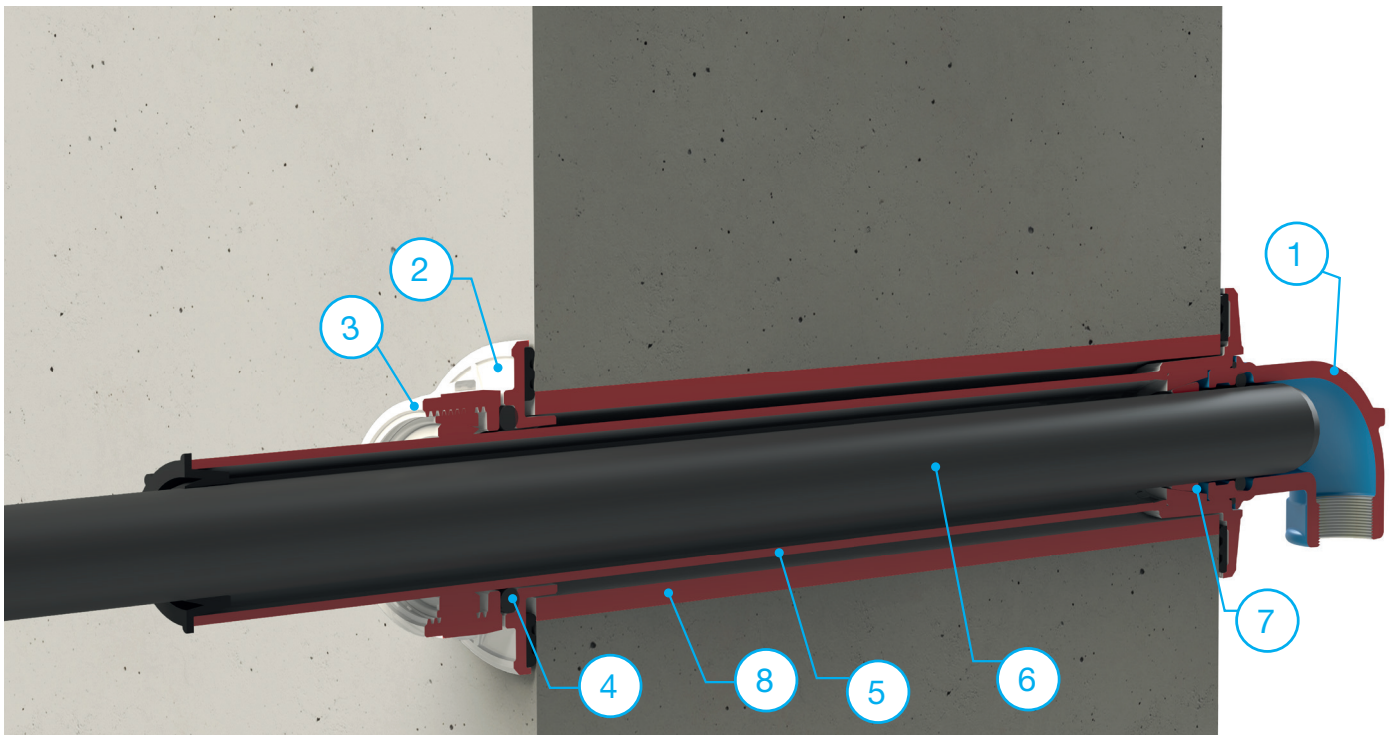
Protective pipe for pipe entries, stainless steel, ord. no. 705-00/706-00

With the protective pipe for pipe entries, medium-bearing PE pipes are connected via the stainless steel protection pipe with the integrated push-fit fitting. The installation of the pipe entry connection is carried out with the aid of two annular space seals. Before installation a corresponding core drilling must be made in the concrete wall. The annular space seals must be provided on site and are not included in the scope of delivery.

Technical features

- With integrated ZAK fitting on the building interior
- Two versions: Straight or 90° angle

Assembly situation pipe entry connection dry installation, ord. no. 683-00



1. Fitting
2. Pressure flange
3. Clamping elements

4. Seal
5. Protection pipe
6. Medium pipe

7. Clamping ring
8. Construction tube or core drilling