

### 1. Intended use

The Hawle VARIO can be used in the field of potable water up to 16 bar.

It consists of the base body and the restraint joint set made up of threaded rods, spherical washers, ball sockets, and nuts.

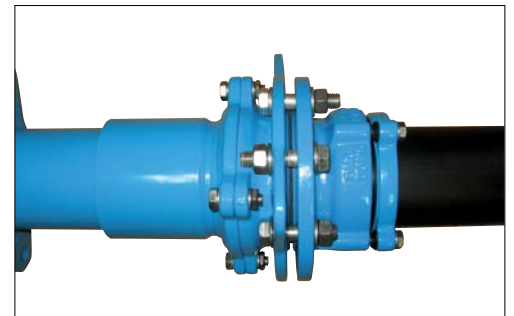
During installation and mounting, the applicable standards and regulations, the provisions for the prevention of accidents, as well as the trade associations' provisions shall be complied with.



### 2. Product description

The HAWLE VARIO is a telescopic flanged pipe fitting with additional angulation features permitting the compensation of decreasing tension and subsiding that may occur after pipe fittings or valves are dismantled or cut out.

The HAWLE VARIO flanged pipe fittings are the perfect solution for all repair situations related with water pipelines. HAWLE VARIO is also the optimum solution for alignment and/or length adjustments in case of new installations.



### 3. Assembly

The opposing flanges and/or flanged pipe fittings shall be connected with the pipeline. If restraint flanges are used, please tighten the device for tensile retention only after the second flange is aligned, too.

#### 3.1 VARIO

- a) Screw one flange of the HAWLE VARIO with the opposing flange (on the pipeline).
- b) Move the HAWLE VARIO to the correct position. The device allows the adjustment of length compensation (see table) and angulation (max. 10°), depending on what is needed. The maximum length is marked with a red line. This line must not be visible in the installation situation. **IMPORTANT:** The two marked threaded rod eyelets must be arranged mirror-inverted to each other.
- c) Screw the other flange end of the HAWLE VARIO with the opposing flange (or pipe fitting, gate valve).

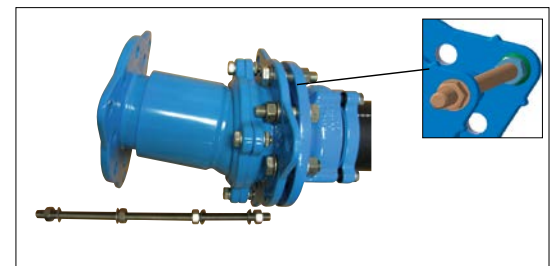
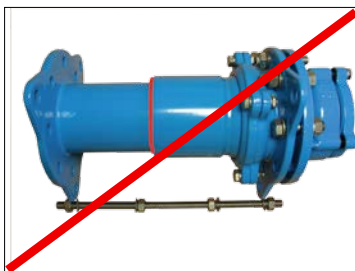
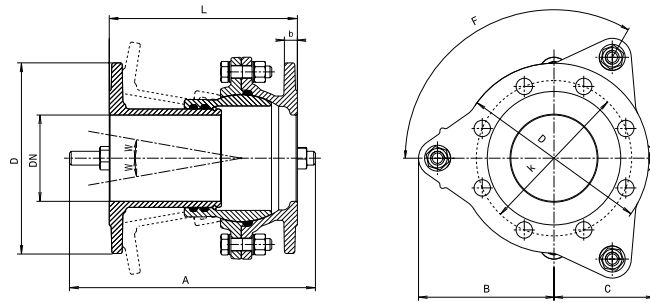


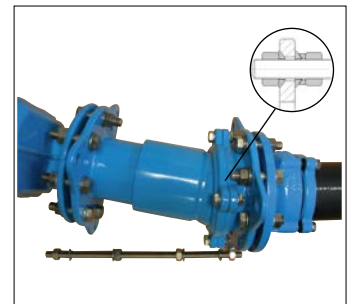
Table of adjusting range:



Ord. Nr.	DN	Version	Adjusting range L [mm]	A [mm]	B [mm]	C [mm]	D [mm]	F [mm]	k [mm]	Angle W	Weight [kg]
800 050 0000	50	short	150 - 207	285	212	87	165	3x120°	125	0-10°	8,90
800 050 0001	50	long	207 - 323	415	212	87	165	3x120°	125	0-10°	10,20
800 080 0000	80	short	150 - 214	285	247	107	200	3x120°	160	0-10°	12,90
800 080 0001	80	lang	214 - 344	415	247	107	200	3x120°	160	0-10°	15,20
800 100 0000	100	short	150 - 216	285	267	117	220	3x120°	180	0-10°	14,80
800 100 0001	100	lang	216 - 350	415	267	117	220	3x120°	180	0-10°	17,30
800 150 0000	150	short	175 - 250	330	380	190	285	4x90°	240	0-10°	25,40
800 150 0001	150	lang	250 - 408	480	380	190	285	4x90°	240	0-10°	29,30
800 200 0000	200	short	195 - 292	360	229	229	340	4x90°	297	0-10°	40,30
800 200 0001	200	lang	280 - 462	530	229	229	340	4x90°	297	0-10°	47,30

### 3.2 Restraint joint set

- Take the threaded rods out of the packaging and unscrew the outer nuts and spherical washers on both ends.
- Insert the threaded rod at the shortest side (in side angle) of the HAWLE-VARIO and screw on the outer 2 spherical washers and nuts loosely. **IMPORTANT:** Observe the mounting direction of the restraint joint set. The curved sides of all spherical washers must point inward.
- Insert the other threaded rods as described above and screw the spherical washers and nuts loosely.
- Align the threaded rods parallel to the HAWLE VARIO base body by turning them slightly.
- Tighten all nuts without tension (max. 30 Nm).
- If required, the restraint joint set can be shortened. For this application, use an angle grinder and cutting disc for INOX.



**NOTE:** We recommend mounting the restraint joint set in all installation situations. Otherwise, the system is not locked against longitudinal forces.

## 4. Maintenance

The Hawle VARIO does not need any maintenance.

## 5. Commissioning and leakage testing

After installation, please subject the system to a pressure test in the open trench as described in the DVGW regulations.

**If you have any other questions or if you need more information please contact:**

Hawle Armaturen GmbH  
 - Application Engineering -  
 Liegnitzer Str. 6  
 83395 Freilassing  
 Phone: +49 (0)8654 6303-0  
 Telefax: +49 (0)8654 6303-222  
 E-Mail: [info@hawle.de](mailto:info@hawle.de)  
 Web: [www.hawle.de](http://www.hawle.de)