

1. Intended use / product description:



Medium:

Potable water

Max. operating pressure:

16 bar

Material:

Strap plate: stainless steel A4 with rubber cover

Threaded screws: stainless steel A4

Clamping jaws: glass fibre reinforced polyamide

Saddle seal: EPDM according to DVGW W 270

The adjustable stainless-steel strap with a larger clamping range is used for the safe installation of drilling and gate valve clamps on cast iron and steel pipes (cast PE, cast ZM, steel PE, steel PE ZMU). The strap can be individually adapted to the outside diameter (d) within a specified range by turning the threaded screws.

The particularly wide support of 65 mm ensures minimum surface pressure on the pipe.

The saddle seal supplied compensates the respective pipe diameter for the saddle clamp and thus reliably seals the drill hole.

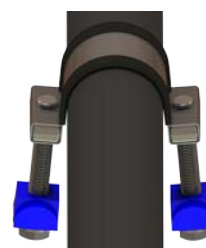
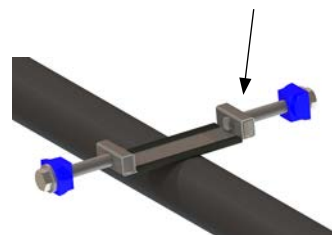
Note on double strap saddle:

There are always two straps (brackets) and a special saddle seal necessary!

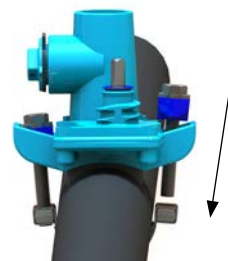
When laying, installing the pipes and during maintenance, it is necessary to refer to and comply with applicable standards and regulations, accident prevention regulations and regulations from trade associations. Installation, assembly and maintenance should only be carried out by qualified personnel.

2. Assembly

2.1 The strap must be performed for better mounting on the pipe.



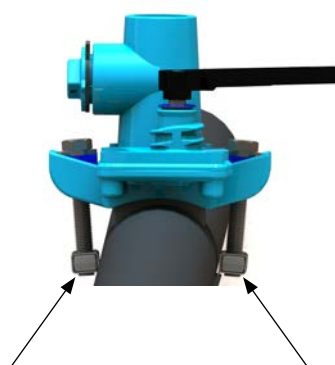
2.2 A screw must be completely unscrewed for mounting on the largest pipe. This is then screwed into the threaded piece from above.



2.3 Assembled state



2.4 Screws must be tightened evenly, slight overhang should be present on both sides.



3. Service and maintenance

The Hawle stainless steel adjustable strap is maintenance free.

4. Commissioning and pressure testing

After successful installation, a pressure test must be carried out in an open pipe trench in accordance with DVGW regulations.

Should you have questions or need further information, please contact:

Hawle Armaturen GmbH
- Application Engineering -
Liegnitzer Str. 6
83395 Freilassing
Telephone: +49 8654 6303-0
Fax: +49 8654 6303-222
Email: info@hawle.de
Website: www.hawle.de