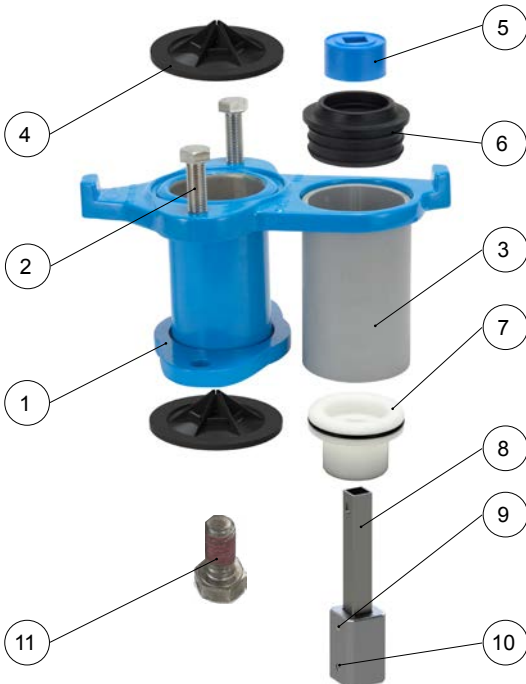


**1. Intended use / Product description**



Pos.	Pc.	Components	Material
1	1	Standpipe extension with coupling plate and oval flange	stainless steel GJS-400, Hawle-epoxy-powder-coated
2	2	Hexagon head screws M16, washers	stainless steel
3	1	PP-pipe	PP
4	2	Dirt gasket	NBR
5	1	PE-bush with square socket	PE
6	1	Cover cap	TPE
7	1	Transition plug with O-ring	POM NBR
8	1	Square bar with adaptor	stainless steel GJS-400
9	1	Grooved stud	stainless steel
10	1	Set screw M8x10	stainless steel
11	1	screw M8x16	stainless steel

**Medium:** Potable water

**Max. operating pressure:** 16 bar

**Material:** See Table

The extension set for Hawle freeflow underground hydrants Ord. No. 490-00 and 490-01 permits the subsequent extension of the hydrant even with the hydrant remaining installed.

The extension set is available at lengths of 100 - 500 mm. Special lengths on request.

For Hawle freeflow underground hydrants Ord. No. 490-00 with pipe cover depths 0.77m and 0.79m Ord. No. 490 080 0816 and 490 081 0816 a special variant of the extension set must be used - on request.

The extension set can only be used for Tele-Hydrant® Ord.No. 492-00 on request.

For installation, assembly, and maintenance, the applicable standards and regulations, accident prevention regulations, as well as the trade associations' provisions shall be complied with.

Installation, assembly, and maintenance should be performed by skilled personnel only.

**2. Installation**

	T-key Hydrant (picture 1), open-end-spanner SW13 (2 and 17), screwdriver (4), open-end-spanner/ratchet SW24 (5, 12 and 15), allen key SW4 (8)
--	---

<p>1. Close the hydrant.</p>	
------------------------------	--

2. Dismantle the spindle head by loosening the hexagon head screw M8x16.



3. Remove the spindle head



4. Lever out the Push cover cap with PE-bushing (blue)



5. Dismantle the claw coupling by loosening the two hexagon head screws M16x50.

Remove the old dirt gasket.



6. Reinsert push cover cap



7. Insert the extension plug (white) with O-ring ( 7) in the cover cap



8. Attach the square bar with adaptor (8) and screw it into the locking mechanism of the square bar using the threaded pin(10)



9. Push the extension of the PE-pipe (3) onto the transition plug (7).



10. Place the dirt seal (4) centric on the carrier pipe of the UFH



11. Place the extension of the standpipe with the coupling plate and the oval flange (1).



12. Screw the oval flange onto the coupling plate of the UFH using 2 hexagonal bolt and washers (2).

Check the correct fit of the dirt gasket (4)



13. Insert the cover cap (6) with the PE-bush, blue (5) .



14. Place the second dirt gasket (4) centric on the standpipe of the extension.

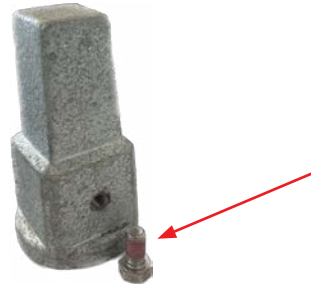


15. Screw the claw coupling of the UFH back onto the coupling plate using hexagon bolts and washers. Torque 110 Nm.

Check the correct fit of the dirt gasket (4)



16. Replace the used screw with the enclosed (new) hexagon head screw M8x16 (11)



17. Slide on the spindle head and screw it into the locking mechanism of the square bar with the hexagonal bolt M8x16



### 3. Servicing and maintenance

The Hawle underground hydrant extension is maintenance-free.

### 4. Commissioning and pressure-testing

After the successful installation, the unit has to be pressure-tested in the open trench observing the maximum operating pressures acc. to the DVGW regulations.

The gaskets between the claw coupling and the coupling plate as well as between the oval flange and the coupling plate of the underground hydrant must be checked especially.

**If you have any other questions or if you need more information, please contact:**

Hawle Armaturen GmbH - Anwendungstechnik - Liegnitzer Str. 6  
83395 Freilassing Telephone: +49 (0)8654-6303-0 Telefax: +49 (0)8654-6303-222 E-Mail: [info@hawle.de](mailto:info@hawle.de)  
Internet: [www.hawle.de](http://www.hawle.de)